



# International Run-Archery Cup 2015, 13 - 17 August - Kaluga (RUS)

Version 1.2 (2 June 2015)



## TO ALL WORLD ARCHERY MEMBER ASSOCIATIONS

Dear President,

On behalf of the Russian Archery Federation and the Organizing Committee I would like to invite you and your teams to take part in the INTERNATIONAL RUN-ARCHERY CUP 2015, which will be held from August 13<sup>th</sup> till August 17<sup>th</sup> 2015 in Kaluga city (RUS).

Enclosed you will find all necessary information concerning schedule, contacts, registration, organization and other important facts with regards to the event.

You will find Russian hospitality and we hope you will enjoy your stay and let us know if there is anything we can do to make your visit more enjoyable.

Please complete the necessary registration process using the online registration form: [online registration](#) or you have to fill in enclosed [Entry form](#) (can be download or found below).

Start date for On-line registration **13 June 2015**

We kindly ask you keep to the deadlines stated below:

<b>Preliminary Entries</b>	<b>01 July 2015</b>
<b>Final Entries</b>	<b>30 July 2015</b>
Preliminary Accommodation Reservation Form	<b>01 July 2015</b>

Transportation Form:	<b>30 July 2015</b>
Final accommodation Reservation Form	<b>30 July 2015</b>

Your family and guests are also welcome to attend.

We look forward to seeing you.

Sincerely yours,

**Vladimir Esheev**

President, Russian Archery Federation  
Council member, WORLD ARCHERY  
Vice-president, WORLD ARCHERY Europe



# International Run-Archery Cup 2015, 13 - 17 August - Kaluga (RUS)

Version 1.2 (2 June 2015)



## PRELIMINARY PROGRAMME

Thursday 13 August	During the day 15:00-18:00	Arrivals, accreditation Unofficial training/Practice
Friday 14 August <b>DAY 1</b>	During the day 16:00-18:00 18:00-19:00 19:00-20:00	Arrivals, accreditation Official Practice & Equipment Inspection <b>Team Captain Meeting</b> <b>Opening ceremony</b>
Saturday 15 August <b>DAY 2</b>	10:00-10:45 11:00-12:00 13:00-15:00 15:15-15:30 16:00-18:00 18:00-19:00 20:00-22:00	<b>RUN-ARCHERY SPRINT</b> Official Practice & Equipment Inspection <b>QUALIFICATION</b> men and women <b>SEMIFINALS</b> and <b>FINALS</b> Award ceremony Official training/Practice <b>Team Captain Meeting</b> Run-Archery International Seminar
Sunday 16 August <b>DAY 3</b>	10:00-12:00 12:15-12:30 15:00-17:00 17:15-17:30 17:30-18:00 21:00-01:00	<b>RUN-ARCHERY INDIVIDUAL</b> Award ceremony <b>RUN-ARCHERY RELAY</b> Award ceremony Closing ceremony Party
Monday 17 August		Official Departure Date

### NOTE:

This preliminary programme is subject to change according to the number of participants in each division and TV requirements. All changes will be published and distributed to all participants in advance

### DIVISION

Division by gender – Men, Women.  
Division by ages – Seniors, Juniors, Cadets.  
**Seniors**(born from 1994 and older),  
**Juniors**(born in 1995-1996),  
**Cadets**(born from 1997 and younger), permitted to take part in older classes

### RUN-ARCHERY SPRINT

Two rounds – qualification one and finals. 3 running laps by 400 meter, 2 shootings range, shooting positions – stand, 4 targets and 8 arrows per each shooting, for each miss – 70-meter penalty lap. In qualification separate in 30 seconds start intervals by random draw. The best 24 proceed to finals (semi-, final), heats of different formats with mass-start by 8 competitors. Shooting distance – 18 meters, target face – 16 cm. Drop-down targets used.



# International Run-Archery Cup 2015, 13 - 17 August - Kaluga (RUS)

Version 1.2 (2 June 2015)



## **RUN-ARCHERY INDIVIDUAL**

Group start at 10 athletes in every heat. Athletes include in heat by random draw. 5 running laps. 4 shooting positions – stand-kneel-stand-kneel, 4 targets and 4 arrows per each shooting, for each miss – 70-meter penalty lap. All men and women run 5 laps by 1 km. Shooting distance – 18 meters, target face – 16 cm. Drop-down targets used.

## **RUN-ARCHERY RELAY**

Every team – 3 persons (2 men + 1 woman). Group start for all teams. For each athletes: 3 running laps by 1 km. 2 shooting range, shooting positions – stand, 4 targets and 4 arrows per each shooting, for each miss – 70-meter penalty lap. Shooting distance – 18 meters, target face – 40 cm. Targets with paper target faces used.

## **COMPETITION RULES**

### **RUN-ARCHERY SPRINT AND INDIVIDUAL**

- 1) Equipment in accordance with article 35.33. Appendix A of Chapter 11 of World Archery C&R Book 5, concerning and with regards to the out of snow period
- 2) The organizer will not be responsible for any damage while hit or miss system targets shooting of non-aluminum arrows. Allowed only aluminum arrows with semispherical points
- 3) Bow and arrows are carried by competitors themselves. Carrying a bow only in the hand. Carrying an arrows the any combinations of carrying – in a hand or on a back using arrow harness or can be mounted on the bow riser.
- 4) Competition starts and finish with running lap
- 5) Shooting target is 16 cm in diameter and shooting distance is 18 meters
- 6) "HIT or MISS" shooting system is used
- 7) Shooting positions:
  - 7.1) Standing – competitors shall shoot from a standing position and without support, with both feet behind a marking of shooting line
  - 7.2) Kneeling – competitors shall shoot in the kneeling position, behind a marking of shooting line, shall place one knee on the ground and the chest should remain upright
- 8) Appeals (Article 35.28.), Penalties (Article 35.29.), Disciplinary Measures (Article 35.30.), Prohibitions and Sanctions for non-competing Persons (Article 35.31.) are in accordance with respective articles of Chapter 11 of World Archery C&R Book 5, concerning and with regards to the out of snow period

### **RUN-ARCHERY RELAY**

For relay used all the rules described above, except for the rules described in this paragraph.

- 1) All kinds of bow with one string and without cams can be used.
- 2) Use of sight and clicker is prohibited.



# International Run-Archery Cup 2015, 13 - 17 August - Kaluga (RUS)

Version 1.2 (2 June 2015)



## KALUGA

**Kaluga** is a city and the administrative center of Kaluga Oblast, Russia, located on the Oka River 150 kilometers (93 mi) southwest of Moscow.

Kaluga was founded in the mid-14th century as a border fortress on the southwestern borders of the Grand Duchy of Moscow. It was first mentioned in chronicles in the 14th century as Koluga; the name is from Old Russian kaluga 'bog, quagmire. In the Middle Ages, Kaluga was a minor settlement owned by the Princes Vorotynsky. The ancestral home of these princes is located southwest from the modern city.

Kaluga is connected to Moscow by a railway line and the ancient roadway, the Kaluga Road (now partly within Moscow (as Starokaluzhskoye Shosse), partly the A101 road). This road was the favored escape route from the Moscow trap for Napoleon in the fall of 1812. But General Kutuzov repelled Napoleon's advances in this direction and forced the retreating French army onto the old Smolensk road, previously devastated by the French during their invasion of Russia.

On several occasions during the Russian Empire Kaluga was the residence of political exiles and prisoners such as the last Crimean khan Şahin Giray (1786), the Kyrgyz sultan Arigazi-Abdul-Aziz (1828), the Georgian princess Thecla (1834–1835), and the Avar leader Imam Shamil (1859–1868).

More about Kaluga you can read in [wikipedia](#).





# International Run-Archery Cup 2015, 13 - 17 August - Kaluga (RUS)

Version 1.2 (2 June 2015)



## PRELIMINARY & FINAL REGISTRATION

You have two ways of registration. First way, [online registration](#). Second way, you have to fill in enclosed [Entry form](#) (in .doc format available for download).

If you choose the [online registration](#), please provide the following information for each member of the team:

- First name
- Second name
- Date of birth
- Gender
- Country
- Sport club or team
- Status
- Valid e-mail

If you choose [Entry form](#), please send this form completed to the Local Organizing Committee (LOC).

**Note:** The LOC after receiving your final entry will contact you to coordinate final registration and all other matters concerning your participation in the event

For any questions regarding registration, please contact Vladimir Matveev ([matveev@skiarchery.ru](mailto:matveev@skiarchery.ru)).

## TIMELINE FOR REGISTRATION DUE DATES

Start date for on-line registration	<b>13 June 2015</b>
VISA Invitation Letter Form	AS EARLY AS POSSIBLE!
Preliminary Accommodation Reservation Form deadline	<b>01 July 2015</b>
Transportation Form deadline	<b>30 July 2015</b>
Final Accommodation's Reservation Form deadline	<b>30 July 2015</b>

## OFFICIAL ENTRY FEES

Entry fees:

Individual: **EURO 10** per athlete

## GENERAL INFORMATION

LOC Contact: Vladimir Matveev

Email: [matveev@skiarchery.ru](mailto:matveev@skiarchery.ru)

WhatsApp: +79265908960

Language: Russian, English

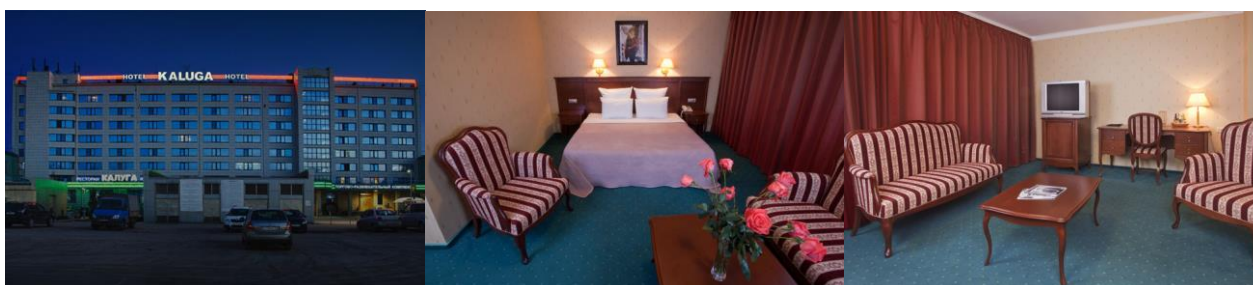
## ACCOMMODATION

Not far from the venue of the competition there are several hotels where you can comfortably accommodate. To reserve rooms please email [matveev@skiarchery.ru](mailto:matveev@skiarchery.ru).





Hotel [GREEN PARK](#)



Hotel [KALUGA](#)



Hotel [OLD TOWN](#)

**Note:** on the ACCOMMODATION RESERVATION FORM below you will find the prices for accommodation. Each hotel is able to provide meals, which is paid separately.

## ACCREDITATION

Upon your arrival

## ARRIVAL/TRANSPORTATION

To arrange your transportation (and not only after arrival in Russia) in the best way please address to competition contacts of organizers. For your information - train Moscow-Kaluga ~ €10-€20 per one way, transfer Moscow-Kaluga-Moscow upon request.

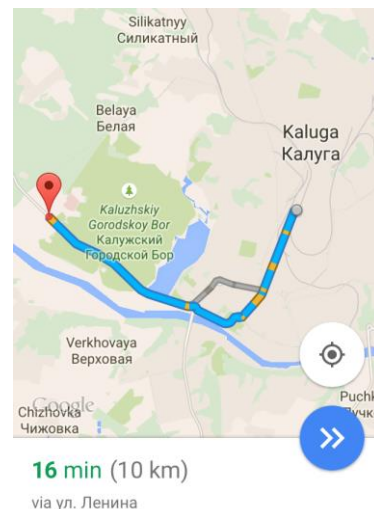
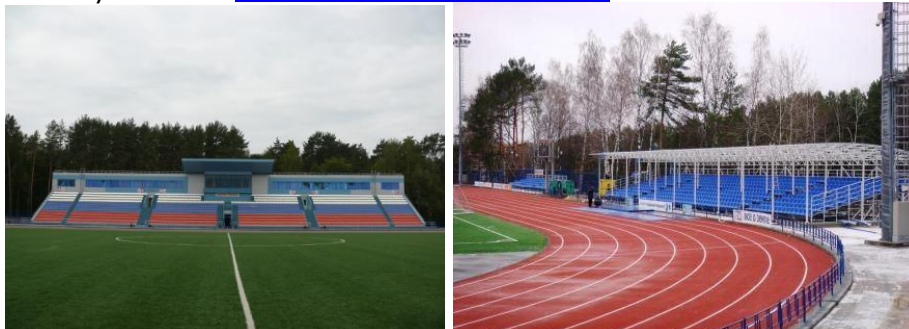
## LIABILITY AND INSURANCE

The organizer will not be held liable for any injuries to persons or material damage. All participants must have an adequate accident and health insurance. With the entry by names the participant or the team confirms existence of the required insurance for all persons entered. In hours of time of competitions at archery venue an ambulance car with a physician, a nurse and a paramedic will be on duty throughout the tournaments.

*In case of an emergency or life threatening situation call 112 (also from mobile) for immediate services*

## SCENE OF COMPETITION

Archery venue – [Football stadium «Annenki»](#)



## VISAS

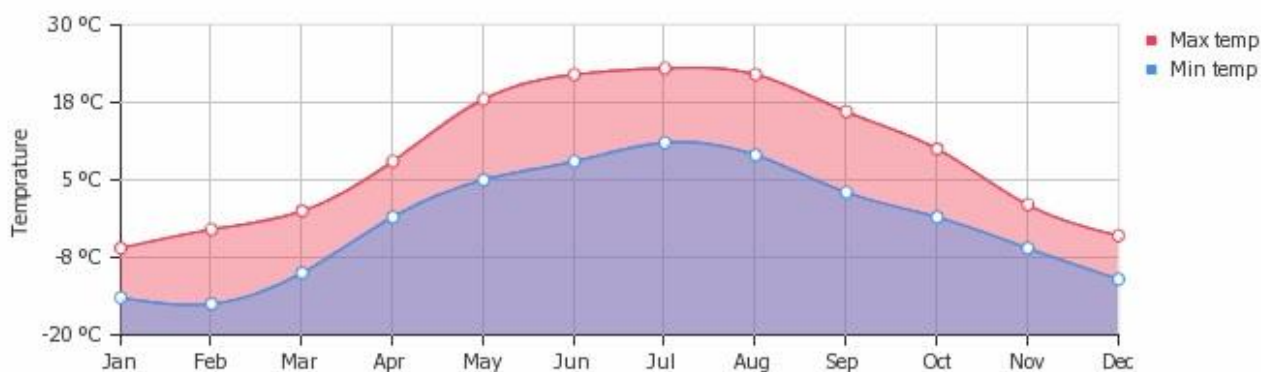
All participants who will need entry visas for Russia are kindly requested to contact the organizer which will assist you for getting visas. IT IS IMPORTANT TO REVIEW THE ELIGIBILITY AND PASSPORT REQUIREMENTS TO ENSURE YOU MEET ALL THE CRITERIA BEFORE MAKING YOUR TRAVEL ARRANGEMENTS.

### PLEASE KEEP IN MIND:

- The Organizing Committee cannot guarantee you will receive a VISA and the Organizing Committee cannot provide special clearances if you are denied or apply too late. Also note that the application and interview process in your country may vary
- According to Russian laws carrying a bow through the boarder must have special permission, only inquiries via the Organizing Committee will satisfy with this requirement

## CLIMATE

Estimated average High Temp in August: (24°C) – Estimated Avg. Low Temp in August: (10°C).



The website Weather [here](#)



# International Run-Archery Cup 2015, 13 - 17 August - Kaluga (RUS)

Version 1.2 (2 June 2015)



## MEDIA

### Options for media

There are possibilities for media support throughout the competitions:

- Internet, e-media, website
- TV, mass-media

### Options for Sponsors

- your advertising material at prominent places
- your logo on the bows and start bibs of participants
- your logo at website and in invitation package
- your company banner will be showcased during the event
- you can also suggest your company logo for the advertisement of the event
- sponsorship would be highlighted in announcements to the community, during the introduction at the event itself and in an article about the event to be published in media
- you and any other representatives would be most welcome to attend so that we could thank you personally for your support.

In case of any queries, please feel free to contact us by phone or by mail.





# International Run-Archery Cup 2015, 13 - 17 August - Kaluga (RUS)

Version 1.2 (2 June 2015)



[DOWNLOAD FORM](#)

## ACCOMMODATION RESERVATION FORM

Preliminary reservations will be accepted starting 13 June 2015. Reservations are processed in order as received. Hotel priority is on a first come first serve basis.

LOC Registration Contact: Vladimir Matveev. Email: [matveev@skiarchery.ru](mailto:matveev@skiarchery.ru)

Country/Team: \_\_\_\_\_ Email: \_\_\_\_\_

Contact Given Name: \_\_\_\_\_ Family Name: \_\_\_\_\_

**THE PRICE IS JUST FOR ACCOMMODATION** (Breakfast is included only in the hotel GREEN PARK)

Hotel	Room Type/ Occupancy	Number of Rooms by TYPE	Number of Persons		Total People	PPPN EURO		Nights		Total
			Female	Male						
<b>Kaluga hotel GREEN PARK</b>	Single				0	X € 40	X		=	
	Double				0	X € 29	X		=	
	Triple(two rooms)				0	X € 25	X		=	
<b>Hotel KALUGA</b>	Single				0	X € 78	X		=	
	Double				0	X € 45	X		=	
<b>Hotel OLD TOWN</b>	Single				0	X € 30	X		=	
	Double				0	X € 20	X		=	
	Triple				0	X € 20	X		=	

Accommodation Total										
---------------------	--	--	--	--	--	--	--	--	--	--

Federation contact person / Phone: \_\_\_\_\_

Fax: \_\_\_\_\_

Arrival Date: \_\_\_\_\_ Departure Date: \_\_\_\_\_

All accommodation is subject to availability at the time of booking.

Please check here if you require facilities for the disabled.

Please inform us if any of your team members have any dietary requirements or food allergies.



# International Run-Archery Cup 2015, 13 - 17 August - Kaluga (RUS)

Version 1.2 (2 June 2015)



[DOWNLOAD FORM](#)

## TRANSPORTATION REQUEST FORM

Please send this form to the LOC with the Final Accommodation Reservation form prior to 30 July 2015 Email: [matveev@skiarchery.ru](mailto:matveev@skiarchery.ru)

Country/Team: \_\_\_\_\_ Email: \_\_\_\_\_

Contact Given Name: \_\_\_\_\_ Family Name: \_\_\_\_\_

Phone: \_\_\_\_\_ Fax: \_\_\_\_\_

Number of people in your Group: \_\_\_\_\_

**ARRIVAL INFORMATION:** We will arrive at Moscow by plane:

Date: (DD/MM/YYYY) \_\_\_\_\_ Carrier (i.e. Aeroflot, Lufthansa): \_\_\_\_\_

Flight Number: \_\_\_\_\_

Flight Arrival Time \_\_\_\_\_

Check here if you are renting a vehicle and DO NOT NEED transportation from the airport.

**DEPARTURE INFORMATION:** We will depart from Moscow by plane:

Date: (DD/MM/YYYY) \_\_\_\_\_ Carrier (i.e. Aeroflot, Lufthansa): \_\_\_\_\_

Flight Number: \_\_\_\_\_

Flight Departure Time \_\_\_\_\_

Check here if you are renting a vehicle and DO NOT NEED transportation from the airport.





## International Run-Archery Cup 2015, 13 - 17 August - Kaluga (RUS)

Version 1.2 (2 June 2015)



### ENTRY FORM

[DOWNLOAD ENTRY FORM](#)

National Association or Club name						Contact person:				
Address	Street, house №:					Phone:				
	Country:		City				Fax:			
	Postal code:					E-Mail:				
№	Surname		Name		Date of birth (DD.MM.YYYY)		Function		Gender	
1							Official		male	
2							Coach		female	
3							Athlete			
							...			

*!!! PLEASE FILL IN THIS FORM IN TYPING*

Date: \_\_\_\_\_ Signature: \_\_\_\_\_  
President / Secretary General
Surname, Name

***with signature above I certify that I have adequate accident-health insurance and undertake to comply the anti-doping rules.***

PLEASE SUBMIT FINAL ENTRY FORM TO ORGANIZING COMMITTEE :

- Competition Chef, Mr. Vladimir Matveev, preferably by email to [matveev@skiarchery.ru](mailto:matveev@skiarchery.ru)
- or
- Russian Archery Federation, Luzhnetskaya nab. 8-266, Moscow, 119992, Russia, Phone/Fax : +7 495 725 46 91, by email to [rusarco@roc.ru](mailto:rusarco@roc.ru)